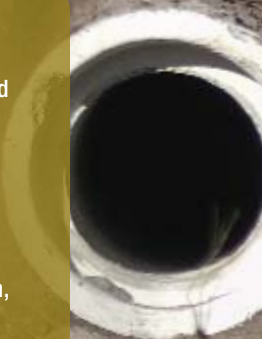




The PT-70 is a high-performance loader with premium features and exceptional value. It works productively in a wide range of applications using an advanced rubber track undercarriage with suspension for maximum traction, flotation and operator comfort. With a narrow machine width, the PT-70 can easily maneuver and operate in confined or congested work sites.





## **PT-70** **RUBBER TRACK** **LOADER**

The PT-70 is a purpose-built rubber track loader designed with careful attention to geometry and distribution of machine weight. The result is a machine with exceptional balance and performance within a compact and durable package.

The PT-70's undercarriage uses 28 wheels to spread the machine's weight over the length and width of its rubber tracks. By using a maximum number of wheels, the weight per wheel is lower, track life is longer and you get ASV's legendary traction that makes them the best in the industry. Suspension of the undercarriage increases traction even more, promotes longer machine and track life, and keeps the operator comfortable all day long. This patented technology keeps the PT-70 productive in virtually any ground condition.

For maximum undercarriage durability, all idler wheel bearings are protected by long-wearing metal face seals like those used on most steel track dozers. A unique drive sprocket uses free turning sleeves for

efficient low-friction transfer of drive power to the PT-70's all-rubber tracks. The result is smooth track drive with exceptional response.

The PT-70 also includes a state-of-the-art auxiliary hydraulic system that makes it easy to get more work done, even on the most demanding applications. It comes standard with powerful bi-directional high flow for brushcutting, snowblowing and other tough jobs. Standard low flow hydraulics also feature variable speed operation for precise and intermittent control of attachment functions. Quick-connect hydraulic fittings are standard, along with a supplemental electrical connection for attachments.

The PT-70 comes with a spacious, comfortable operator station. The wide front opening allows easy access and can be outfitted with an optional slide-up door that allows operation with the door open or closed. An adjustable contour seat lets the operator stay productive throughout the day. The optional air conditioner is a high-



efficiency unit that mounts on the roof of the operator station and blows cool air down to keep the operator comfortable, even in the hottest conditions.

The PT-70 is outfitted with state-of-the-art pilot-operated joystick controls that give precise and low-effort control of all machine functions. Auxiliary hydraulic and electric functions are built into the joysticks for quick and easy control of all attachments.

The PT-70's operator station also includes conveniences like a standard 12-volt DC power port and multiple storage areas. It can be customized with a choice of cab enclosures, an adjustable suspension seat, sliding side windows and more.

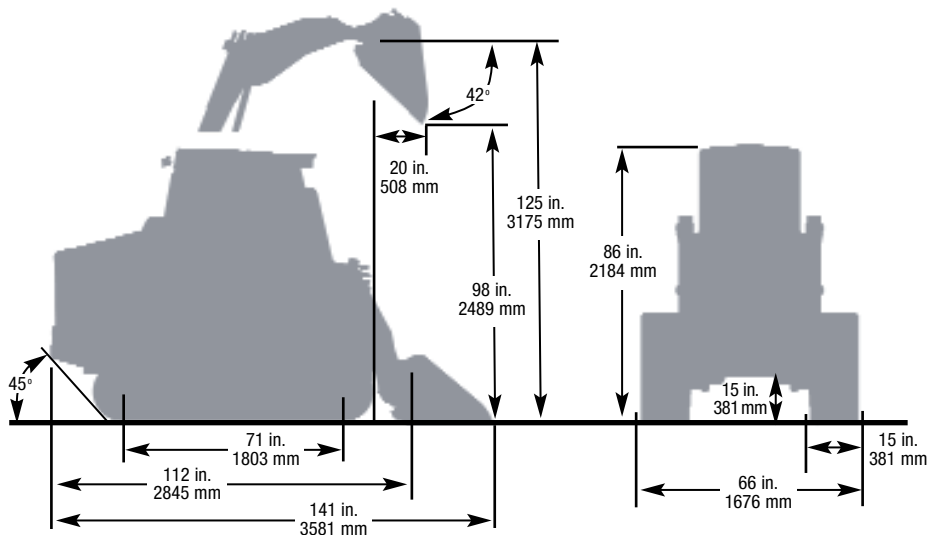
## STANDARD & OPTIONAL EQUIPMENT

### STANDARD

- Air cleaner, dual stage
- Attachment control, electric
- Battery, 925 CCA
- Brake, parking
- Diesel engine, Perkins, turbo
- Heater, engine block
- Indicators: high, low, glow, park
- Hitch receiver
- Lights, halogen, 4 front, 2 rear
- Pilot joystick controls
- Quick-attach, manual
- ROPS/FOPS canopy w/poly roof panel
- Slope meter
- Tie-down loops, front/rear
- Alternator, 90-amp
- Auxiliary hyd. system, LOW / HIGH flow
- Back-up alarm
- DC Outlet, 12V
- Gauges: fuel, coolant temp., hyd. temp., hour meter, tachometer, battery voltage, oil pressure,
- Lap bar/arm rest
- Operator presence switch
- Power management system
- Quick-connect hydraulic fittings
- Seat belt, 3-inch (76 mm) wide
- Throttle, hand and foot
- Tracks, 15 inch (381 mm) wide

### OPTIONAL

- Air conditioner
- Brush guard
- Cab enclosure with wiper
- Heater
- Quick-attach, hydraulic
- Window kit, side, sliding
- Beacon, rotating
- Bucket positioning, selectable
- Front door, polycarbonate, slide-up
- Horn
- Suspension seat
- Wiper, door



## PT-70 SPECIFICATIONS & DIMENSIONS

### WEIGHTS:

Operating weight:	7,890 lb. / 3579 kg.
Shipping weight, w/out bucket:	7,315 lb. / 3318 kg.
Ground pressure @ operating weight	3.7 psi / 25.5 kPa
Ground pressure @ shipping weight	3.43 psi / 23.6 kPa

### TRACKS:

Track width:	15 in. / 381 mm
Track length, on ground:	71 in. / 1803 mm
Ground contact area:	2,130 in <sup>2</sup> / 1.37 m <sup>2</sup>

### AUXILIARY HYDRAULICS:

Low flow, variable:	0 - 20 gpm / 0 - 75.7 lpm
High flow, maximum:	30 gpm / 113.6 lpm
Pressure:	3,000 psi / 20 670 kPa

### ENGINE:

Type:	Perkins 804C-33T, turbocharged diesel
Displacement:	202 in. <sup>3</sup> / 3.3 L
Gross power @ 2800 rpm:	71 hp / 53 kW
Torque, peak:	173 ft-lb / 235 Nm

### OPERATING SPECIFICATIONS:

Tipping load:	5,500 lb. / 2495 kg
Operating capacity 50% tip load*:	2,750 lb. / 1247 kg
Operating capacity 35% tip load*:	1,925 lb. / 873 kg
Travel speed, maximum:	7 mph / 11.3 kph

### SERVICE REFILL CAPACITIES:

Fuel tank:	18 gal. / 68 L
Hydraulic tank:	21 gal. / 79 L
Engine coolant:	3 gal. / 12 L
Engine oil, inc. filter:	9 qts. / 8.52 L

\* SAE J818 standards define operating capacities of rubber-tired skid steers (50% tipping load) and tracked loaders (35% tipping load). There are no standards defining the operating capacity of machines equipped with a suspended undercarriage or machines with rubber tracks.

Machines featured in photos may include additional equipment.

Specifications are subject to change without notice.