



The PT-50 is a mid-sized loader with a suspended rubber track undercarriage, exceptional ground clearance, comfortable operation and rugged construction. Operating the PT-50 is a breeze, with ergonomic pilot-operated joysticks and a load-sensing hydraulic system. It can be outfitted with any of three different rubber track types to fit virtually any ground condition or application.



PT-50 **RUBBER TRACK** **LOADER**

The PT-50 combines performance and exceptional value in a mid-sized loader that's ideal for many construction, landscaping, utility and private-owner applications. The front-mounted quick-attach interface gives the PT-50 the versatility of using virtually any industry-standard attachment.

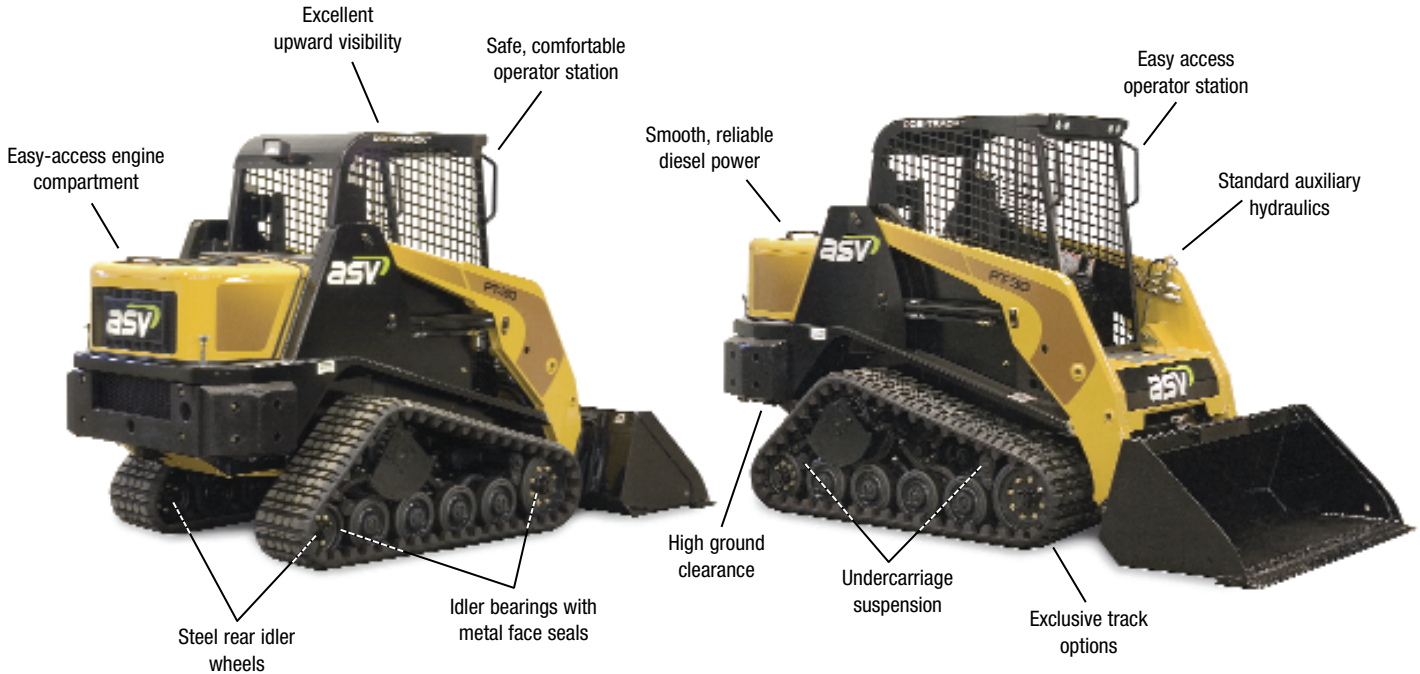
The PT-50's undercarriage uses 24 wheels to spread the machine's weight over the length and width of its rubber tracks. By using a maximum number of wheels, the weight per wheel is lower, track life is longer and you get ASV's legendary traction that makes them the best in the industry. Suspension of the undercarriage increases traction even more, promotes longer machine and track life, and keeps the operator comfortable all day long. This patented technology keeps the PT-50 productive in virtually any ground condition.

The PT-50 is powered by a smooth and reliable 2.2 liter, 4-cylinder Perkins diesel engine and a time proven hydrostatic

powertrain that includes direct drive motors and unique track drive sprockets. Rotating sleeves on the sprockets mesh with the tracks' rubber lugs for highly efficient and smooth transfer of power to the tracks.

The PT-50 is easy and comfortable to operate. It can be outfitted with a choice of enclosed cabs that can include air conditioning and/or heat for operating in inclement weather. Pilot-operated joysticks give the operator low effort and precise control of machine speed, direction and of the attachment.

The PT-50 is outfitted with standard general purpose tracks with moderate treads that are ideal for the widest range of ground conditions and applications. For applications where extremely wet, soft or slippery conditions are expected, the exclusive Extreme Terrain Tracks can be a good option. These tracks include deep tread lugs for better gripping action, wider lug spacing for improved self-cleaning and are 16.5 in.



(419 mm) wide for 10 percent more flotation. They perform best in swampy soil, slick mud and snowy conditions.



When the surface you work on is delicate or fragile, consider the exclusive Turf Track option. These unique tracks offer excellent traction and operation on dry surfaces, yet have completely smooth surface for scuff-free performance and ultimate protection of turf, landscaping and similar surfaces.



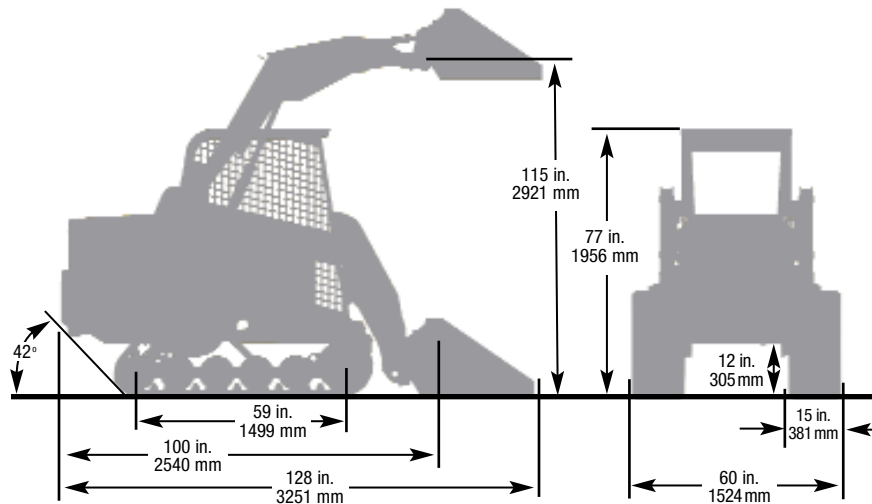
STANDARD & OPTIONAL EQUIPMENT

STANDARD

- Air cleaner, dual stage
- Attachment control, electric
- Battery, 770 CCA
- DC Outlet, 12V
- Fuel gauge
- Hitch receiver
- Indicators: Eng. oil pressure, engine temp., hot hyd. oil, low battery
- Pilot joystick controls
- ROPS/FOPS canopy w/poly roof panel
- Quick-connect hydraulic fittings
- Tracks, general purpose
- Wiring, prewired for all options
- Alternator, 55-amp
- Auxiliary hydraulic system
- Brake, parking
- Diesel engine, naturally-aspirated
- Heater, engine block
- Hour meter
- Lap bar/arm rest
- Operator presence switch
- Power management system
- Quick-attach, manual
- Suspended undercarriage
- Tie-down loops, front/rear

OPTIONAL

- Air conditioning / heater
- Beacon, rotating
- Bucket positioning, selectable
- Cab enclosure with A/C, heater, insulation and wiper
- Front door, polycarbonate
- Horn
- Quick-attach, hydraulic
- Sound insulation kit
- Tracks, Extreme Terrain 16.5 inch (419 mm) wide
- Window kit, rear
- Back-up alarm
- Brush guard
- Cab enclosure, w/wiper
- Engine temperature gauge and tachometer
- Heater
- Lift points, bolt-on
- Seat belt, 3-inch (76 mm)
- Track tensioner, grease
- Tracks, Turf (smooth tread)
- Window kit, side, sliding
- Wiper, door



PT-50 SPECIFICATIONS & DIMENSIONS

WEIGHTS:

Operating weight:	6,200 lb. / 2812 kg.
Shipping weight, w/out bucket:	5,500 lb. / 2495 kg.
Ground pressure @ operating weight	3.5 psi / 24.1 kPa
Ground pressure @ shipping weight	3.1 psi / 21.4 kPa

TRACKS:

Track width:	15 in. / 381 mm
Track length, on ground:	59 in. / 1499 mm
Ground contact area:	1,770 in ² / 1.14 m ²

AUXILIARY HYDRAULICS:

Flow, maximum:	16.3 gpm / 61.7 lpm
Pressure:	3,000 psi / 20 670 kPa

ENGINE:

Type:	Perkins 404C-22, diesel, naturally-aspirated
Displacement:	134 in. ³ / 2.2 L
Gross power @ 2800 rpm:	50 hp / 37.3 kW
Torque, peak:	105 ft-lb / 143 Nm

OPERATING SPECIFICATIONS:

Tipping load:	3,800 lb. / 1724 kg
Operating capacity 50% tip load*:	1,900 lb. / 862 kg
Operating capacity 35% tip load*:	1,330 lb. / 603 kg
Travel speed, maximum:	8 mph / 13 kph

SERVICE REFILL CAPACITIES:

Fuel tank:	15 gal. / 56.8 L
Hydraulic tank:	8 gal. / 30.3 L
Engine coolant:	2 gal. / 7.5 L
Engine oil, inc. filter:	11.2 qts. / 10.6 L

* SAE J818 standards define operating capacities of rubber-tired skid steers (50% tipping load) and tracked loaders (35% tipping load). There are no standards defining the operating capacity of machines equipped with a suspended undercarriage or machines with rubber tracks.

Machines featured in photos may include additional equipment.

Specifications are subject to change without notice.